

# **New York State Electric & Gas Corporation**

## **Jennison Transmission Solution Project**

### **Exhibit 4**

### **Environmental Impacts**

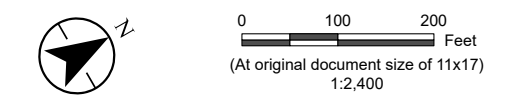
### **Part 7 of 9**





**Jennison Transmission Solution Project**

- Proposed Right-of-Way
- Field-Delineated Feature**
- Delineated Stream Line
- Wetland Continuation Line
- Delineated Wetland – Federal Jurisdiction
- Mapsheet Match Line
- City or Town Boundary
- County Boundary
- Road or Highway**
- Secondary State or County Highway
- Local, Neighborhood, Rural or City Street



**Notes**  
 1. Data Sources: See Figure 4-6 Mapsheet Index notes

*Project Location*  
 Chenango, Delaware, & Otsego Counties, NY

*Client/Project*  
 Jennison Transmission Solution Project  
 NYSEG CLCPA Program

*Prepared by*  
 AB on 2024-02-08  
 TR by DG on 2024-07-30  
 IR by AS on 2024-10-18

*Client/Project*  
 213415070 REVA

**Figure No.**  
**4-6**

**Title**  
**Delineated Wetlands & Streams**  
**Mapsheet 37 of 102**

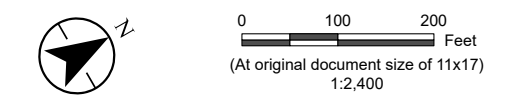
U:\213415070\gis\_cad\gis\project1\permitting\figure\Antiole\VIII\Exhibit\_4\213415070\_JTS\_Environmental\_Impacts.aprx Revised: 2024-11-11 By: abhattaral





**Jennison Transmission Solution Project**

- Proposed Right-of-Way
- Field-Delineated Feature**
  - Delineated Stream Line
  - Wetland Continuation Line
  - Delineated Wetland – Federal Jurisdiction
- Mapsheet Match Line
- Road or Highway**
  - Secondary State or County Highway
  - Local, Neighborhood, Rural or City Street



**Notes**  
 1. Data Sources: See Figure 4-6 Mapsheet Index notes

*Project Location*  
 Chenango, Delaware, & Otsego Counties, NY

*Client/Project*  
 Jennison Transmission Solution Project  
 NYSEG CLCPA Program

*Figure No.*  
**4-6**

*Title*

**Delineated Wetlands & Streams  
 Mapsheet 38 of 102**

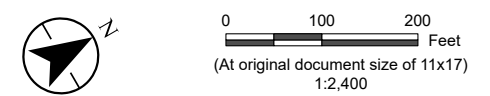
U:\213415070\gis\_cad\gis\_project1\permitting\figure\Antioch\VIII\Exhibit\_4\213415070\_JTS\_Environmental\_Impacts\Impacts.aprx Revised: 2024-11-11 By: abhattarai





**Jennison Transmission Solution Project**

- Proposed Right-of-Way
- Field-Delineated Feature**
- Wetland Continuation Line
- Delineated Stream - State Protected (Class, Standard)
- Delineated Wetland – Federal Jurisdiction
- Delineated Wetland – Non-Jurisdiction
- Mapsheet Match Line
- Road or Highway**
- Secondary State or County Highway



**Notes**  
 1. Data Sources: See Figure 4-6 Mapsheet Index notes

*Project Location*  
 Chenango, Delaware, & Otsego Counties, NY

*Client/Project*  
 Jennison Transmission Solution Project  
 NYSEG CLCPA Program

*Figure No.*  
**4-6**

*Title*  
**Delineated Wetlands & Streams  
 Mapsheet 39 of 102**

Prepared by AB on 2024-02-08  
 TR by DG on 2024-07-30  
 IR by AS on 2024-10-18

213415070 REVA

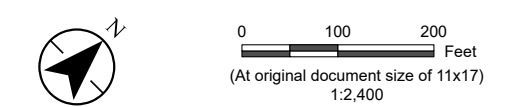
U:\213415070\gis\_cad\gis\project1\permitting\figure\Article\11\Exhibit\_4\213415070\_JTS\_Environmental\_Impacts.aprx Revised: 2024-11-11 By: abhattarai





**Jennison Transmission Solution Project**

- Proposed Right-of-Way
- Mapsheet Match Line
- Road or Highway**
  - Secondary State or County Highway
  - Local, Neighborhood, Rural or City Street



**Notes**  
 1. Data Sources: See Figure 4-6 Mapsheet Index notes

*Project Location*  
 Chenango, Delaware, & Otsego Counties, NY

*Client/Project*  
 Jennison Transmission Solution Project  
 NYSEG CLCPA Program

*Prepared by*  
 AB on 2024-02-08  
 TR by DG on 2024-07-30  
 IR by AS on 2024-10-18

*Client/Project*  
 213415070 REVA

**Figure No.**  
**4-6**

**Title**  
**Delineated Wetlands & Streams**  
**Mapsheet 40 of 102**

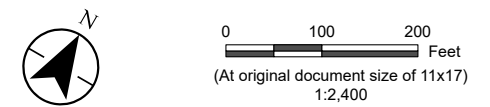
U:\213415070\gis\_cad\gis\_project1\permitting\figure\Article VII\Exhibit\_4\213415070\_JTS\_Environmental\_Impacts\213415070\_JTS\_Exhibit\_Environmental\_Impacts.aprx Revised: 2024-11-11 By: abhattaral





**Jennison Transmission Solution Project**

- Proposed Right-of-Way
- Field-Delineated Feature**
- Wetland Continuation Line
- Delineated Wetland – Non-Jurisdiction
- Mapsheet Match Line
- Road or Highway**
- Secondary State or County Highway



**Notes**  
 1. Data Sources: See Figure 4-6 Mapsheet Index notes

---

*Project Location*  
 Chenango, Delaware, & Otsego Counties, NY

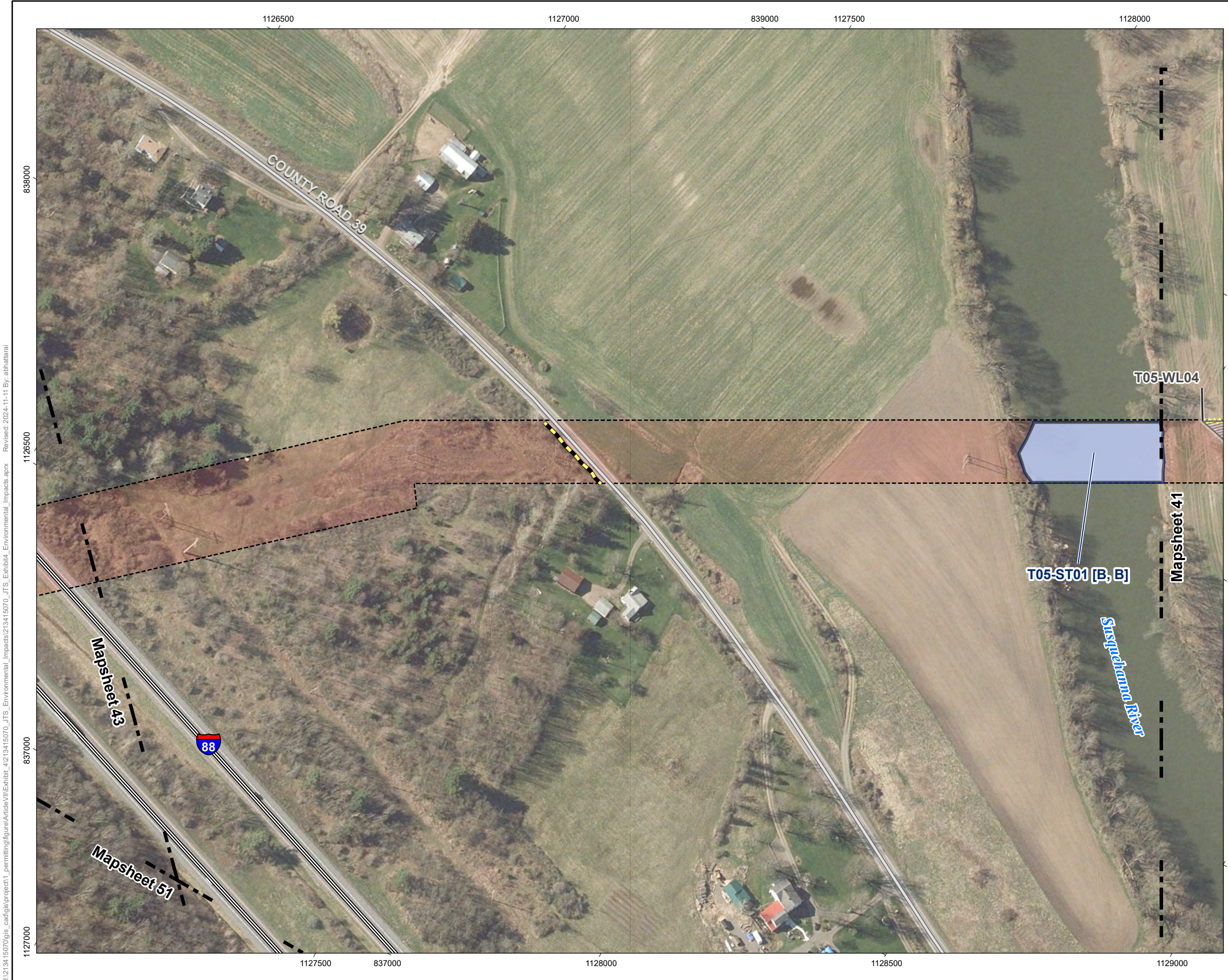
*Client/Project*  
 Jennison Transmission Solution Project  
 NYSEG CLCPA Program

*Figure No.*  
**4-6**

*Title*  
**Delineated Wetlands & Streams  
 Mapsheet 41 of 102**

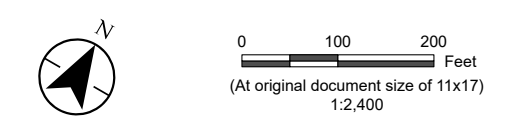
U:\213415070\gis\_cad\gis\project1\permitting\figure\Article VIII\Exhibit\_4\213415070\_JTS\_Environmental\_Impacts\213415070\_JTS\_Environmental\_Impacts.aprx Revised: 2024-11-11 By: abhattalari





**Jennison Transmission Solution Project**

- Proposed Right-of-Way
  
- Field-Delineated Feature**
- Ditch
- Wetland Continuation Line
- Delineated Stream - State Protected (Class, Standard)
- Delineated Wetland – Non-Jurisdiction
  
- Mapsheet Match Line
  
- Road or Highway**
- Interstate
- Local, Neighborhood, Rural or City Street



**Notes**  
 1. Data Sources: See Figure 4-6 Mapsheet Index notes

*Project Location*  
 Chenango, Delaware, & Otsego Counties, NY

*Client/Project*  
 Jennison Transmission Solution Project  
 NYSEG CLCPA Program

*Prepared by* AB on 2024-02-08  
 TR by DG on 2024-07-30  
 IR by AS on 2024-10-18

*Client/Project* 213415070 REVA

*Figure No.*  
**4-6**

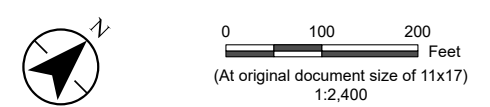
*Title*  
**Delineated Wetlands & Streams  
 Mapsheet 42 of 102**

U:\213415070\gis\_cad\gis\_project\1\_permitting\figure\Article VII\Exhibit\_4\213415070\_JTS\_Environmental\_Impacts.aprx Revised: 2024-11-11 By: abhattalari





- Jennison Transmission Solution Project**
- Proposed Right-of-Way
  - Field-Delineated Feature**
  - Wetland Continuation Line
  - Delineated Wetland – Federal Jurisdiction
  - Mapsheet Match Line
  - Road or Highway**
  - Interstate



**Notes**  
 1. Data Sources: See Figure 4-6 Mapsheet Index notes

*Project Location*  
 Chenango, Delaware, & Otsego Counties, NY

*Client/Project*  
 Jennison Transmission Solution Project  
 NYSEG CLCPA Program

*Figure No.*  
**4-6**

*Title*  
**Delineated Wetlands & Streams  
 Mapsheet 43 of 102**

Prepared by AB on 2024-02-08  
 TR by DG on 2024-07-30  
 IR by AS on 2024-10-18

213415070 REVA

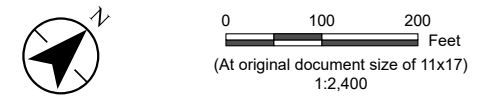
U:\213415070\gis\_cad\gis\project1\permitting\figure\Antiole\11\Exhibit\_4\213415070\_JTS\_Environmental\_Impacts.aprx Revised: 2024-11-11 By: abhattalari





**Jennison Transmission Solution Project**

- Proposed Right-of-Way
- Field-Delineated Feature**
- Culvert
- Ditch
- Wetland Continuation Line
- Delineated Stream
- Delineated Wetland – Federal Jurisdiction
- Mapsheet Match Line



**Notes**  
 1. Data Sources: See Figure 4-6 Mapsheet Index notes

*Project Location*  
 Chenango, Delaware, & Otsego Counties, NY

*Client/Project*  
 Jennison Transmission Solution Project  
 NYSEG CLCPA Program

*Prepared by* AB on 2024-02-08  
*TR by* DG on 2024-07-30  
*IR by* AS on 2024-10-18

213415070 REVA

**Figure No.**  
**4-6**

**Title**  
**Delineated Wetlands & Streams**  
**Mapsheet 44 of 102**

U:\213415070\gis\_cad\gis\_project1\permitting\figure\Antiole\VII\Exhibit\_4\213415070\_JTS\_Environmental\_Impacts\Impacts.aprx Revised: 2024-11-11 By: abhattaral

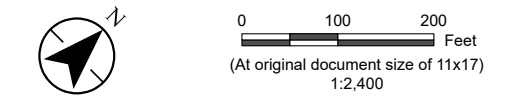




**Jennison Transmission Solution Project**

- Proposed Right-of-Way
- Field-Delineated Feature**
- Culvert
- Delineated Stream Line
- Wetland Continuation Line
- Delineated Stream
- Delineated Open Water
- Delineated Wetland – Federal Jurisdiction
- Delineated Wetland – Federal/State Jurisdiction

- Mapsheet Match Line
- Road or Highway**
- Secondary State or County Highway



**Notes**  
 1. Data Sources: See Figure 4-6 Mapsheet Index notes

*Project Location*  
 Chenango, Delaware, & Otsego Counties, NY

*Client/Project*  
 Jennison Transmission Solution Project  
 NYSEG CLCPA Program

*Figure No.*  
**4-6**

*Title*  
**Delineated Wetlands & Streams  
 Mapsheet 45 of 102**

Prepared by AB on 2024-02-08  
 TR by DG on 2024-07-30  
 IR by AS on 2024-10-18

213415070 REVA

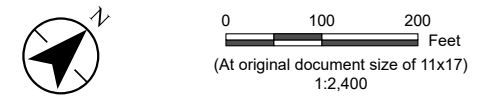
U:\213415070\gis\_cad\gis\project1\permitting\figure\Antiole\VII\Exhibit\_4\213415070\_JTS\_Environmental\_Impacts\213415070\_JTS\_Environmental\_Impacts.aprx Revised: 2024-11-11 By: abhattaral





**Jennison Transmission Solution Project**

- Proposed Right-of-Way
- Field-Delineated Feature**
- Wetland Continuation Line
- Delineated Open Water
- Delineated Wetland – Federal Jurisdiction
- Delineated Wetland – Federal/State Jurisdiction
- Mapsheet Match Line
- Road or Highway**
- Interstate
- Local, Neighborhood, Rural or City Street



**Notes**  
 1. Data Sources: See Figure 4-6 Mapsheet Index notes

*Project Location*  
 Chenango, Delaware, & Otsego Counties, NY

*Client/Project*  
 Jennison Transmission Solution Project  
 NYSEG CLCPA Program

*Prepared by* AB on 2024-02-08  
 TR by DG on 2024-07-30  
 IR by AS on 2024-10-18

213415070 REVA

**Figure No.**  
**4-6**

**Title**  
**Delineated Wetlands & Streams**  
**Mapsheet 46 of 102**

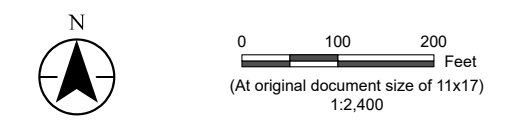
U:\213415070\gis\_cad\gis\_project\1\_permitting\figure\Antiole\11\Exhibit\_4\2\_13415070\_JTS\_Environmental\_Impacts.aprx Revised: 2024-11-11 By: abhtalaral





**Jennison Transmission Solution Project**

- Substation Boundary
- Proposed Right-of-Way
- Field-Delineated Feature**
  - Wetland Continuation Line
  - Delineated Open Water
  - Delineated Wetland – Federal Jurisdiction
  - Delineated Wetland – Non-Jurisdiction
- Mapsheet Match Line
- Road or Highway**
  - Secondary State or County Highway
  - Local, Neighborhood, Rural or City Street



**Notes**  
 1. Data Sources: See Figure 4-6 Mapsheet Index notes

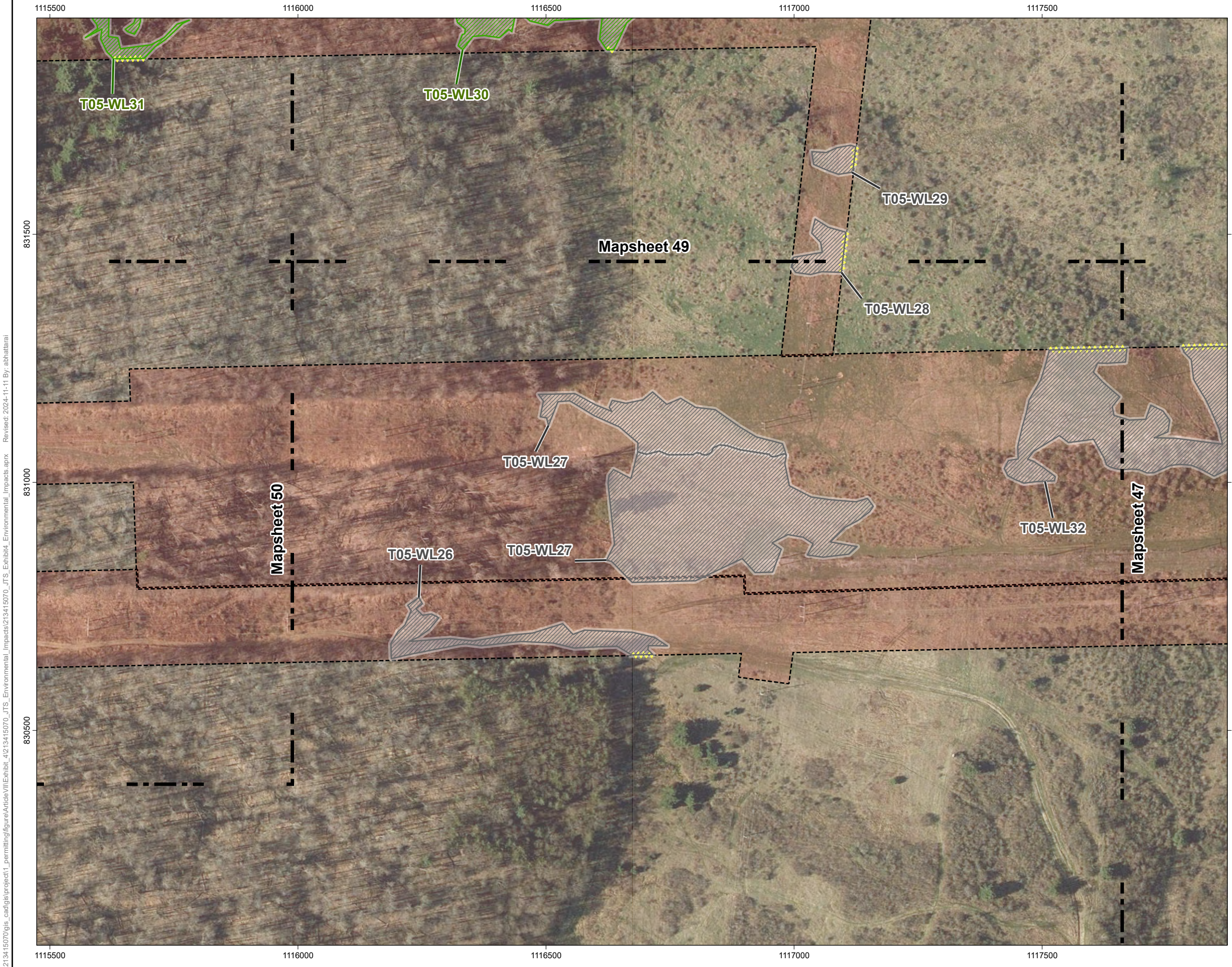
Project Location: Chenango, Delaware, & Otsego Counties, NY  
 Prepared by AB on 2024-02-08  
 TR by DG on 2024-07-30  
 IR by AS on 2024-10-18

Client/Project: Jennison Transmission Solution Project  
 NYSEG CLCPA Program  
 213415070 REVA

Figure No. **4-6**  
 Title **Delineated Wetlands & Streams  
 Mapsheet 47 of 102**

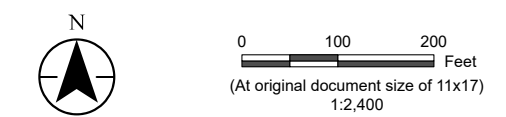
U:\213415070\gis\_cad\gis\project1\permitting\figure\Antiole VII\Exhibit\_4\213415070\_JTS\_Environmental\_Impacts\Impacts\213415070\_JTS\_Environmental\_Impacts.aprx Revised: 2024-11-11 By: abhattarai





**Jennison Transmission Solution Project**

- Proposed Right-of-Way
- Field-Delineated Feature**
- Wetland Continuation Line
- Delineated Wetland – Federal Jurisdiction
- Delineated Wetland – Non-Jurisdiction
- Mapsheet Match Line



**Notes**  
 1. Data Sources: See Figure 4-6 Mapsheet Index notes

*Project Location*  
 Chenango, Delaware, & Otsego Counties, NY

*Client/Project*  
 Jennison Transmission Solution Project  
 NYSEG CLCPA Program

*Figure No.*  
**4-6**

*Title*  
**Delineated Wetlands & Streams  
 Mapsheet 48 of 102**

Prepared by AB on 2024-02-08  
 TR by DG on 2024-07-30  
 IR by AS on 2024-10-18





213415070 REVA

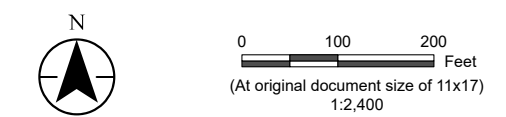
U:\213415070\gis\_cad\gis\_project1\permitting\figure\Antioch\VIII\Exhibit\_4\213415070\_JTS\_Environmental\_Impacts\213415070\_JTS\_Environmental\_Impacts.aprx Revised: 2024-11-11 By: abhattaral





**Jennison Transmission Solution Project**

-  Proposed Right-of-Way
- Field-Delineated Feature**
-  Delineated Stream Line
-  Wetland Continuation Line
-  Delineated Wetland – Federal Jurisdiction
-  Delineated Wetland – Non-Jurisdiction
-  Mapsheet Match Line



**Notes**  
 1. Data Sources: See Figure 4-6 Mapsheet Index notes

*Project Location*  
 Chenango, Delaware, & Otsego Counties, NY

*Client/Project*  
 Jennison Transmission Solution Project  
 NYSEG CLCPA Program

*Prepared by* AB on 2024-02-08  
 TR by DG on 2024-07-30  
 IR by AS on 2024-10-18

*Client/Project* 213415070 REVA

**Figure No.**  
**4-6**

**Title**  
**Delineated Wetlands & Streams**  
**Mapsheet 49 of 102**

U:\213415070\gis\_cad\gis\_project1\permitting\figure\Antiole\VIII\Exhibit\_4\213415070\_JTS\_Environmental\_Impacts\Impacts.aprx Revised: 2024-11-11 By: abhattaral



U:\213415070\gis\_cad\gis\project1\permitting\figure\artioe\11\Exhibit\_4\213415070\_JTS\_Environmental\_Impacts\1213415070\_JTS\_Environmental\_Impacts.aprx Revised: 2024-11-11 By: abhattalal



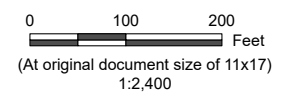
**Jennison Transmission Solution Project**

- Substation Boundary
- Proposed Right-of-Way

**Field-Delineated Feature**

- Wetland Continuation Line
- Delineated Open Water
- Delineated Wetland – Federal Jurisdiction
- Delineated Wetland – Non-Jurisdiction

- Mapsheet Match Line



**Notes**  
1. Data Sources: See Figure 4-6 Mapsheet Index notes

<i>Project Location</i> Chenango, Delaware, & Otsego Counties, NY	<i>Prepared by</i> AB on 2024-02-08 TR by DG on 2024-07-30 IR by AS on 2024-10-18
---	---

*Client/Project* Jennison Transmission Solution Project 213415070 REVA

*Client/Project* NYSEG CLCPA Program

*Figure No.*

**4-6**

*Title*

**Delineated Wetlands & Streams  
Mapsheet 50 of 102**



U:\213415070\gis\_cad\gis\_project1\permitting\figure\Antioe\11\Exhibit\_4\213415070\_JTS\_Environmental\_Impacts\213415070\_JTS\_Environmental\_Impacts.aprx Revised: 2024-11-11 By: abhattaral



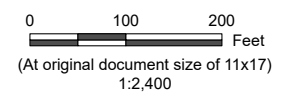
**Jennison Transmission Solution Project**

Proposed Right-of-Way

Mapsheet Match Line

**Road or Highway**

Interstate



**Notes**  
1. Data Sources: See Figure 4-6 Mapsheet Index notes

**Project Location**  
Chenango, Delaware, & Otsego Counties, NY

Prepared by AB on 2024-02-08  
TR by DG on 2024-07-30  
IR by AS on 2024-10-18

**Client/Project** 213415070 REVA  
Jennison Transmission Solution Project  
NYSEG CLCPA Program

**Figure No.**

**4-6**

**Title**

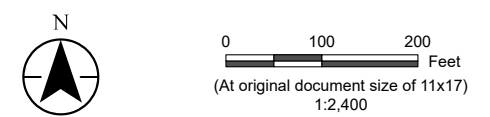
**Delineated Wetlands & Streams  
Mapsheet 51 of 102**





**Jennison Transmission Solution Project**

- Proposed Right-of-Way
- Field-Delineated Feature**
  - Culvert
  - Ditch
  - Wetland Continuation Line
  - Delineated Stream
  - Delineated Wetland – Federal Jurisdiction
  - Delineated Wetland – Non-Jurisdiction
- Mapsheet Match Line
- Road or Highway**
  - Interstate
  - Local, Neighborhood, Rural or City Street



**Notes**  
 1. Data Sources: See Figure 4-6 Mapsheet Index notes

*Project Location*  
 Chenango, Delaware, & Otsego Counties, NY

*Client/Project*  
 Jennison Transmission Solution Project  
 NYSEG CLCPA Program

*Figure No.*  
**4-6**

*Title*  
**Delimited Wetlands & Streams  
 Mapsheet 52 of 102**

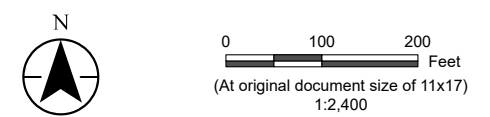
U:\213415070\gis\_cad\gis\_project1\permitting\figure\Article VII\Exhibit\_4\213415070\_JTS\_Environmental\_Impacts\213415070\_JTS\_Environmental\_Impacts.aprx Revised: 2024-11-11 By: abhattarai





**Jennison Transmission Solution Project**

- Proposed Right-of-Way
- Field-Delineated Feature**
- Ditch
- Wetland Continuation Line
- Delineated Wetland – Federal Jurisdiction
- Mapsheet Match Line
- Road or Highway**
- Interstate
- Local, Neighborhood, Rural or City Street



**Notes**  
 1. Data Sources: See Figure 4-6 Mapsheet Index notes

*Project Location*  
 Chenango, Delaware, & Otsego Counties, NY

*Client/Project*  
 Jennison Transmission Solution Project  
 NYSEG CLCPA Program

*Figure No.*  
**4-6**

*Title*  
**Delineated Wetlands & Streams  
 Mapsheet 53 of 102**

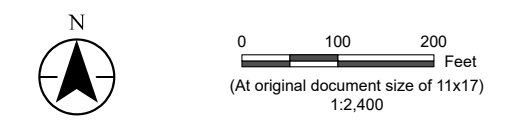
U:\213415070\gis\_cad\gis\project1\permitting\figure\Article VII\Exhibit\_4\213415070\_JTS\_Environmental\_Impacts\213415070\_JTS\_Environmental\_Impacts.aprx Revised: 2024-11-11 By: abhattaral





**Jennison Transmission Solution Project**

- Proposed Right-of-Way
- Field-Delineated Feature**
- Delineated Stream
- Mapsheet Match Line
- Road or Highway**
- Interstate
- Local, Neighborhood, Rural or City Street



**Notes**  
 1. Data Sources: See Figure 4-6 Mapsheet Index notes

*Project Location*  
 Chenango, Delaware, & Otsego Counties, NY

*Client/Project*  
 Jennison Transmission Solution Project  
 NYSEG CLCPA Program

*Figure No.*  
**4-6**

*Title*

**Delimited Wetlands & Streams  
 Mapsheet 54 of 102**

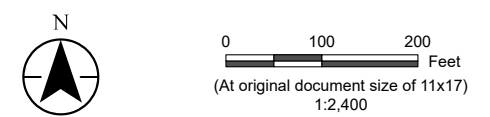
U:\213415070\gis\_cad\gis\project1\permitting\figure\Antiole\VII\Exhibit\_4\213415070\_JTS\_Environmental\_Impacts\Impacts.aprx Revised: 2024-11-11 By: abhattaral





**Jennison Transmission Solution Project**

- Proposed Right-of-Way
- Field-Delineated Feature**
- Delineated Stream
- Delineated Wetland – Federal Jurisdiction
- Mapsheet Match Line
- City or Town Boundary
- County Boundary
- Road or Highway**
- Interstate
- Local, Neighborhood, Rural or City Street
- Village Boundary



**Notes**  
 1. Data Sources: See Figure 4-6 Mapsheet Index notes

<i>Project Location</i> Chenango, Delaware, & Otsego Counties, NY	<i>Prepared by</i> AB on 2024-02-08 TR by DG on 2024-07-30 IR by AS on 2024-10-18
<i>Client/Project</i> Jennison Transmission Solution Project NYSEG CLCPA Program	213415070 REVA

*Figure No.*  
**4-6**

*Title*

**Delineated Wetlands & Streams  
 Mapsheet 55 of 102**

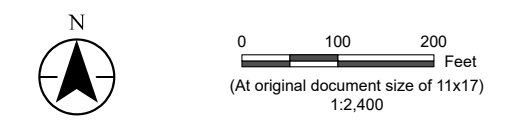
U:\213415070\gis\_cad\gis\project1\permitting\figure\Antioe\VII\Exhibit\_4\213415070\_JTS\_Environmental\_Impacts\Impacts.aprx Revised: 2024-11-11 By: abhattarai





**Jennison Transmission Solution Project**

- Proposed Right-of-Way
  
- Field-Delineated Feature**
- Culvert
- Wetland Continuation Line
- Delineated Stream
- Delineated Wetland – Federal Jurisdiction
  
- Mapsheet Match Line
  
- Road or Highway**
- Interstate
- Secondary State or County Highway
- Local, Neighborhood, Rural or City Street
- Village Boundary



**Notes**  
 1. Data Sources: See Figure 4-6 Mapsheet Index notes

*Project Location*  
 Chenango, Delaware, & Otsego Counties, NY

*Prepared by*  
 AB on 2024-02-08  
 TR by DG on 2024-07-30  
 IR by AS on 2024-10-18

*Client/Project*  
 Jennison Transmission Solution Project  
 NYSEG CLCPA Program

*Client/Project* 213415070 REVA

*Figure No.*  
**4-6**

*Title*  
**Delineated Wetlands & Streams  
 Mapsheet 56 of 102**

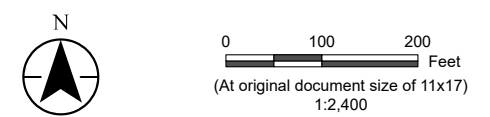
U:\213415070\gis\_cad\gis\project1\permitting\figure\Article VII\Exhibit\_4\213415070\_JTS\_Environmental\_Impacts\213415070\_JTS\_Exhibit\_Environmental\_Impacts.aprx Revised: 2024-11-11 By: abhattaral





**Jennison Transmission Solution Project**

- Proposed Right-of-Way
- Field-Delineated Feature**
- Wetland Continuation Line
- Delineated Stream
- Delineated Wetland – Federal Jurisdiction
- Mapsheet Match Line
- Road or Highway**
- Interstate
- Secondary State or County Highway
- Local, Neighborhood, Rural or City Street



**Notes**  
 1. Data Sources: See Figure 4-6 Mapsheet Index notes

*Project Location*  
 Chenango, Delaware, & Otsego Counties, NY

*Client/Project*  
 Jennison Transmission Solution Project  
 NYSEG CLCPA Program

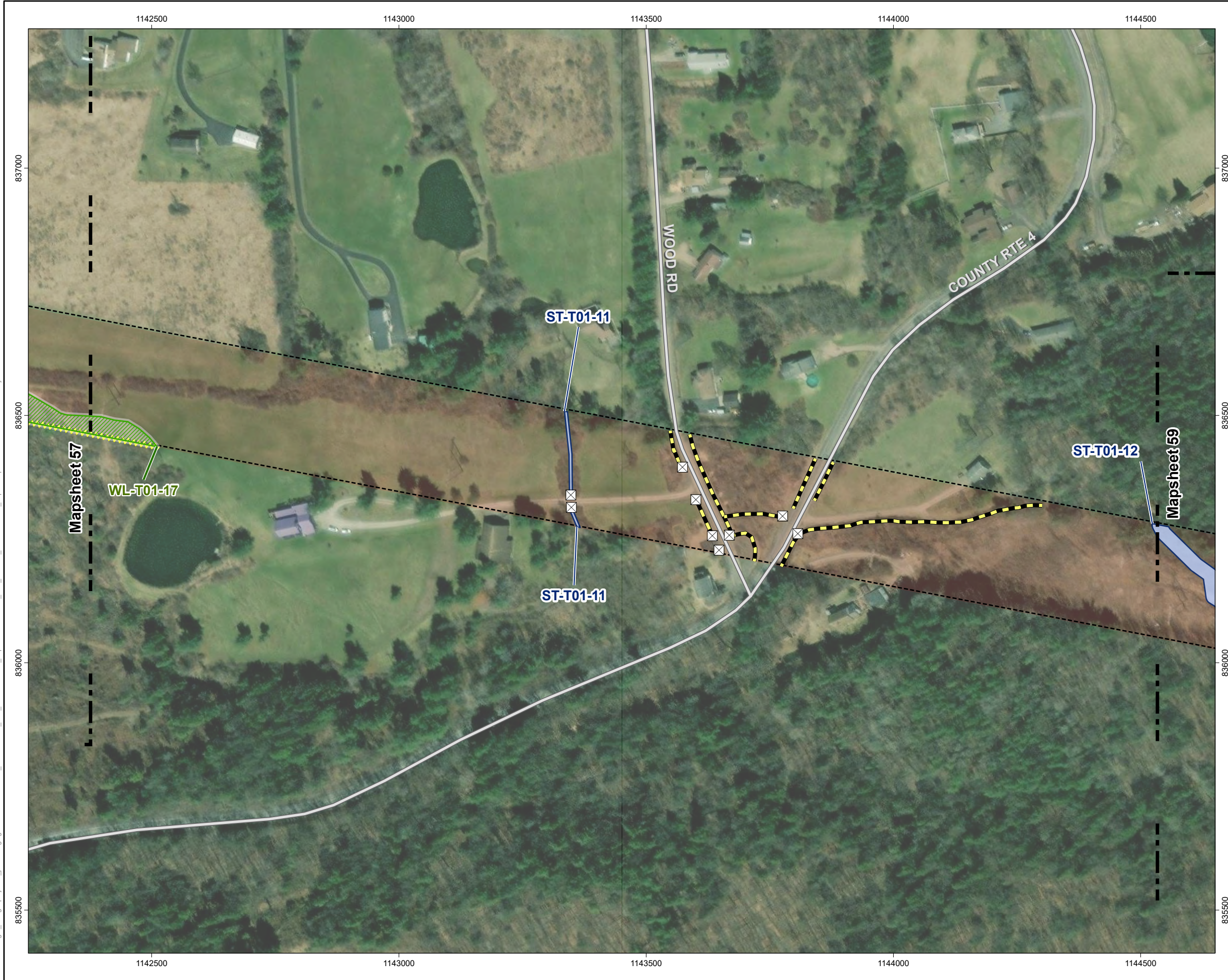
*Figure No.*  
**4-6**

*Title*  
**Delinedated Wetlands & Streams  
 Mapsheet 57 of 102**

U:\213415070\gis\_cad\gis\project1\permitting\figure4-6\Antioe\VII\Exhibit\_4\213415070\_JTS\_Environmental\_Impacts.aprx Revised: 2024-11-11 By: abhattaral

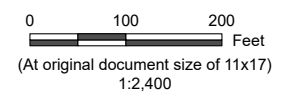


U:\213415070\gis\_cad\gis\project1\permitting\figure\Antioe\VIII\Exhibit\_4\213415070\_JTS\_Environmental\_Impacts\Impacts.aprx Revised: 2024-11-11 By: abhattaral



**Jennison Transmission Solution Project**

- Proposed Right-of-Way
- Field-Delineated Feature**
- Culvert
- Ditch
- Wetland Continuation Line
- Delineated Stream
- Delineated Wetland – Federal Jurisdiction
- Mapsheet Match Line
- Road or Highway**
- Local, Neighborhood, Rural or City Street



**Notes**  
 1. Data Sources: See Figure 4-6 Mapsheet Index notes

*Project Location*  
 Chenango, Delaware, & Otsego Counties, NY

*Client/Project*  
 Jennison Transmission Solution Project  
 NYSEG CLCPA Program

*Figure No.*  
**4-6**

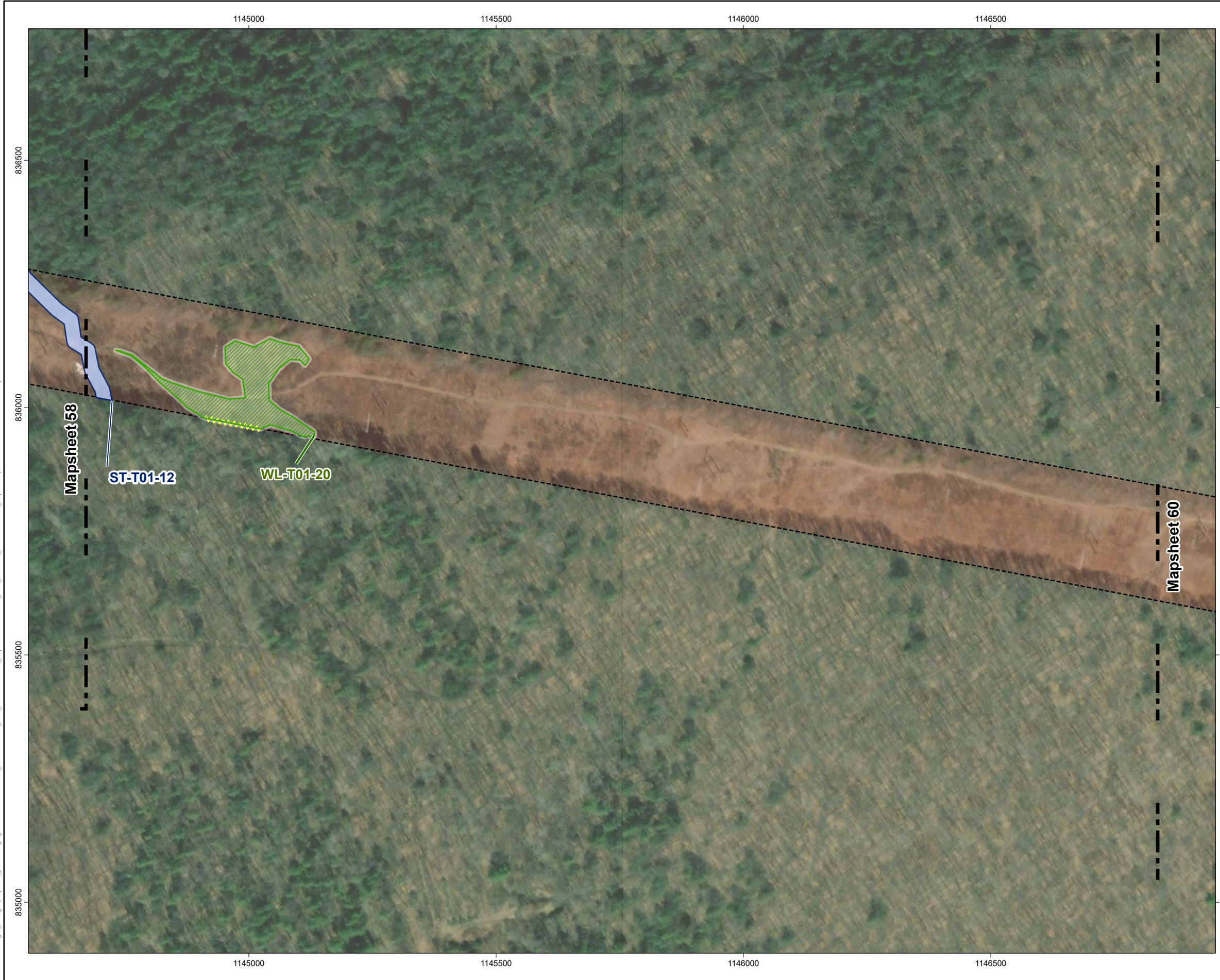
*Title*  
**Delineated Wetlands & Streams  
 Mapsheet 58 of 102**

*Prepared by* AB on 2024-02-08  
 TR by DG on 2024-07-30  
 IR by AS on 2024-10-18






213415070 REVA

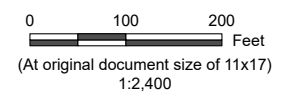


U:\213415070\gis\_cad\gis\project1\permitting\figure\Antioe\VII\Exhibit\_4\213415070\_JTS\_Environmental\_Impacts\213415070\_JTS\_Environmental\_Impacts.aprx Revised: 2024-11-11 By: abhattaral



**Jennison Transmission Solution Project**

-  Proposed Right-of-Way
- Field-Delineated Feature**
-  Wetland Continuation Line
-  Delineated Stream
-  Delineated Wetland – Federal Jurisdiction
-  Mapsheet Match Line



**Notes**  
 1. Data Sources: See Figure 4-6 Mapsheet Index notes

---

*Project Location*  
 Chenango, Delaware, & Otsego Counties, NY

*Prepared by* AB on 2024-02-08  
 TR by DG on 2024-07-30  
 IR by AS on 2024-10-18

---

*Client/Project*  
 Jennison Transmission Solution Project  
 NYSEG CLCPA Program

*Client/Project* 213415070 REVA

---

*Figure No.*  
**4-6**

---

*Title*





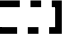
**Delineated Wetlands & Streams  
Mapsheet 59 of 102**

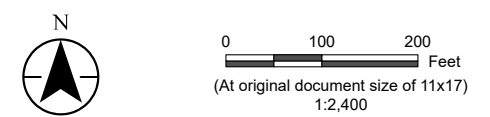


U:\213415070\gis\_cad\gis\project1\permitting\figure\Antiole VII\Exhibit\_4\213415070\_JTS\_Environmental\_Impacts\213415070\_JTS\_Environmental\_Impacts.aprx Revised: 2024-11-11 By: abhattaral



**Jennison Transmission Solution Project**

-  Proposed Right-of-Way
- Field-Delineated Feature**
-  Wetland Continuation Line
-  Delineated Wetland – Federal Jurisdiction
-  Delineated Wetland – Non-Jurisdiction
-  Mapsheet Match Line



**Notes**  
 1. Data Sources: See Figure 4-6 Mapsheet Index notes

---

*Project Location*  
 Chenango, Delaware, & Otsego Counties, NY

*Client/Project*  
 Jennison Transmission Solution Project  
 NYSEG CLCPA Program

*Figure No.*  
**4-6**

*Title*

**Delineated Wetlands & Streams**  
**Mapsheet 60 of 102**

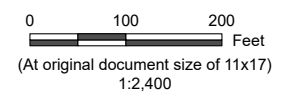


U:\213415070\gis\_cad\gis\_project1\permitting\figure\Antiole\VII\Exhibit\_4\213415070\_JTS\_Environmental\_Impacts\213415070\_JTS\_Exhibit\_Environmental\_Impacts.aprx Revised: 2024-11-11 By: abhattalal



**Jennison Transmission Solution Project**

- Proposed Right-of-Way
- Field-Delineated Feature**
- Wetland Continuation Line
- Delineated Wetland – Non-Jurisdiction
- Mapsheet Match Line
- Road or Highway**
- Local, Neighborhood, Rural or City Street



**Notes**  
 1. Data Sources: See Figure 4-6 Mapsheet Index notes

Project Location: Chenango, Delaware, & Otsego Counties, NY  
 Prepared by AB on 2024-02-08  
 TR by DG on 2024-07-30  
 IR by AS on 2024-10-18

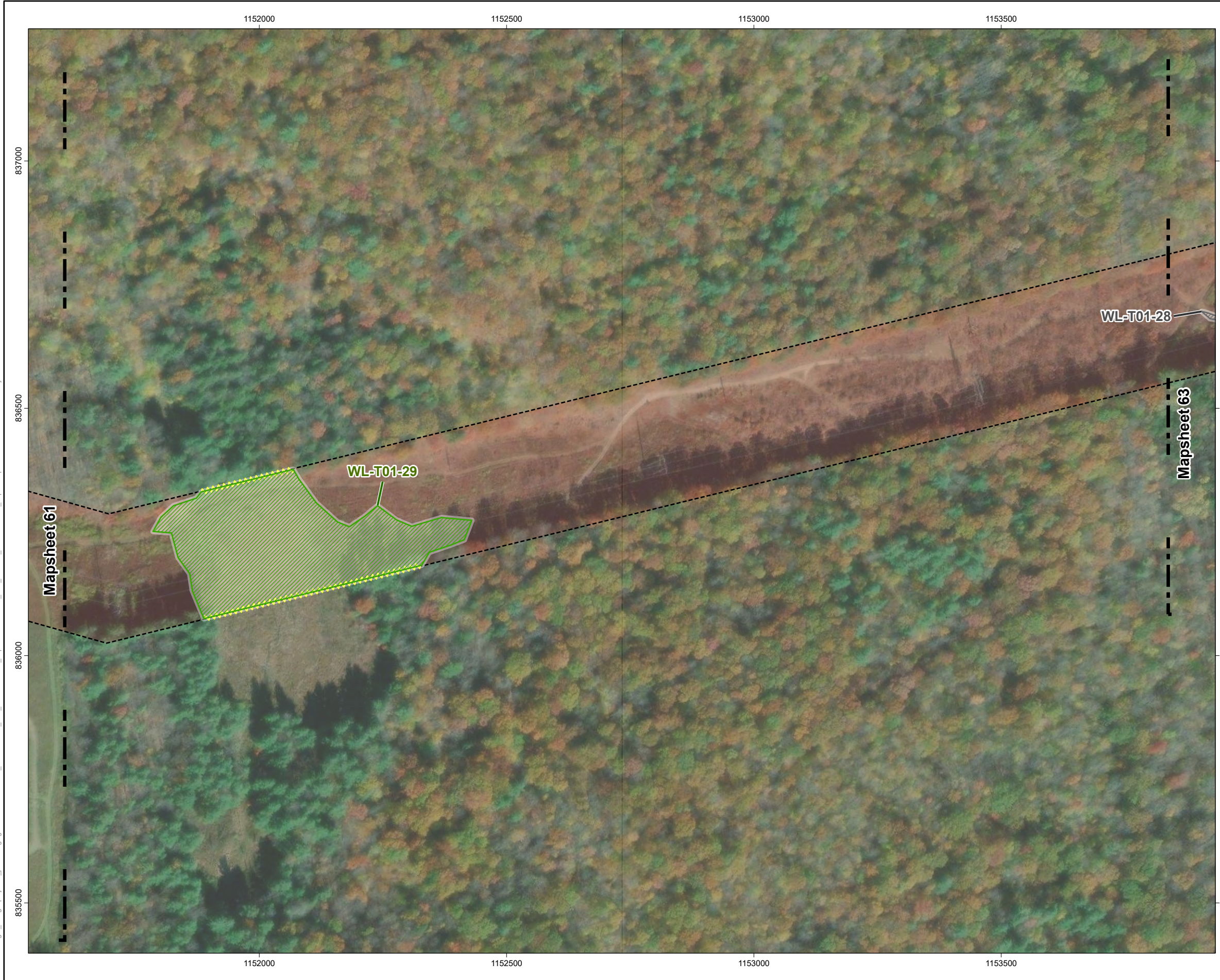
Client/Project: Jennison Transmission Solution Project  
 NYSEG CLCPA Program  
 213415070 REVA

Figure No. **4-6**






Title: **Delineated Wetlands & Streams  
 Mapsheet 61 of 102**



U:\213415070\gis\_cad\gis\project1\permitting\figure\Article VII\Exhibit\_4\213415070\_JTS\_Environmental\_Impacts\213415070\_JTS\_Exhibit\_Environmental\_Impacts.aprx Revised: 2024-11-11 By: abhattaral



**Jennison Transmission Solution Project**

-  Proposed Right-of-Way
- Field-Delineated Feature**
-  Wetland Continuation Line
-  Delineated Wetland – Federal Jurisdiction
-  Delineated Wetland – Non-Jurisdiction
-  Mapsheet Match Line

WL-T01-23

WL-T01-29

Mapsheet 61

Mapsheet 63



0 100 200 Feet  
(At original document size of 11x17)  
1:2,400

**Notes**  
1. Data Sources: See Figure 4-6 Mapsheet Index notes

Project Location: Chenango, Delaware, & Otsego Counties, NY  
Prepared by AB on 2024-02-08  
TR by DG on 2024-07-30  
IR by AS on 2024-10-18

Client/Project: Jennison Transmission Solution Project  
NYSEG CLCPA Program  
213415070 REVA

Figure No.  
**4-6**

Title

**Delineated Wetlands & Streams**  
**Mapsheet 62 of 102**

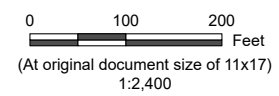


U:\213415070\gis\_cad\gis\_project1\permitting\figure\artioe\VI\Exhibit\_4\213415070\_JTS\_Environmental\_Impacts\213415070\_JTS\_Environmental\_Impacts.aprx Revised: 2024-11-11 By: abhattaral



### Jennison Transmission Solution Project

- Proposed Right-of-Way
- Field-Delineated Feature**
- Wetland Continuation Line
- Delineated Open Water
- Delineated Wetland – Federal Jurisdiction
- Delineated Wetland – Non-Jurisdiction
- Mapsheet Match Line



**Notes**  
 1. Data Sources: See Figure 4-6 Mapsheet Index notes

Project Location: Chenango, Delaware, & Otsego Counties, NY  
 Prepared by AB on 2024-02-08  
 TR by DG on 2024-07-30  
 IR by AS on 2024-10-18

Client/Project: Jennison Transmission Solution Project  
 NYSEG CLCPA Program  
 213415070 REVA

Figure No. **4-6**

Title

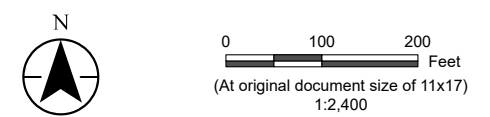
### Delineated Wetlands & Streams Mapsheet 63 of 102





**Jennison Transmission Solution Project**

- Proposed Right-of-Way
- Field-Delineated Feature
- Delineated Wetland – Non-Jurisdiction
- Mapsheet Match Line



**Notes**  
 1. Data Sources: See Figure 4-6 Mapsheet Index notes

*Project Location*  
 Chenango, Delaware, & Otsego Counties, NY

*Client/Project*  
 Jennison Transmission Solution Project  
 NYSEG CLCPA Program

*Figure No.*  
**4-6**

*Title*  
**4-6**

**Delinedated Wetlands & Streams  
 Mapsheet 64 of 102**

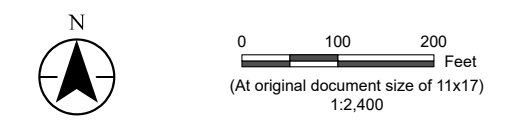
U:\213415070\gis\_cad\gis\project1\permitting\figure\Antioe\VIII\Exhibit\_4\213415070\_JTS\_Environmental\_Impacts.aprx Revised: 2024-11-11 By: abhattalari





**Jennison Transmission Solution Project**

- Proposed Right-of-Way
- Field-Delineated Feature**
- Culvert
- Ditch
- Wetland Continuation Line
- Delineated Wetland – Federal Jurisdiction
- Mapsheet Match Line
- Road or Highway**
- Local, Neighborhood, Rural or City Street



**Notes**  
 1. Data Sources: See Figure 4-6 Mapsheet Index notes

---

*Project Location*  
 Chenango, Delaware, & Otsego Counties, NY

*Client/Project*  
 Jennison Transmission Solution Project  
 NYSEG CLCPA Program

*Prepared by* AB on 2024-02-08  
*TR by* DG on 2024-07-30  
*IR by* AS on 2024-10-18

*213415070 REVA*

---

*Figure No.*  
**4-6**

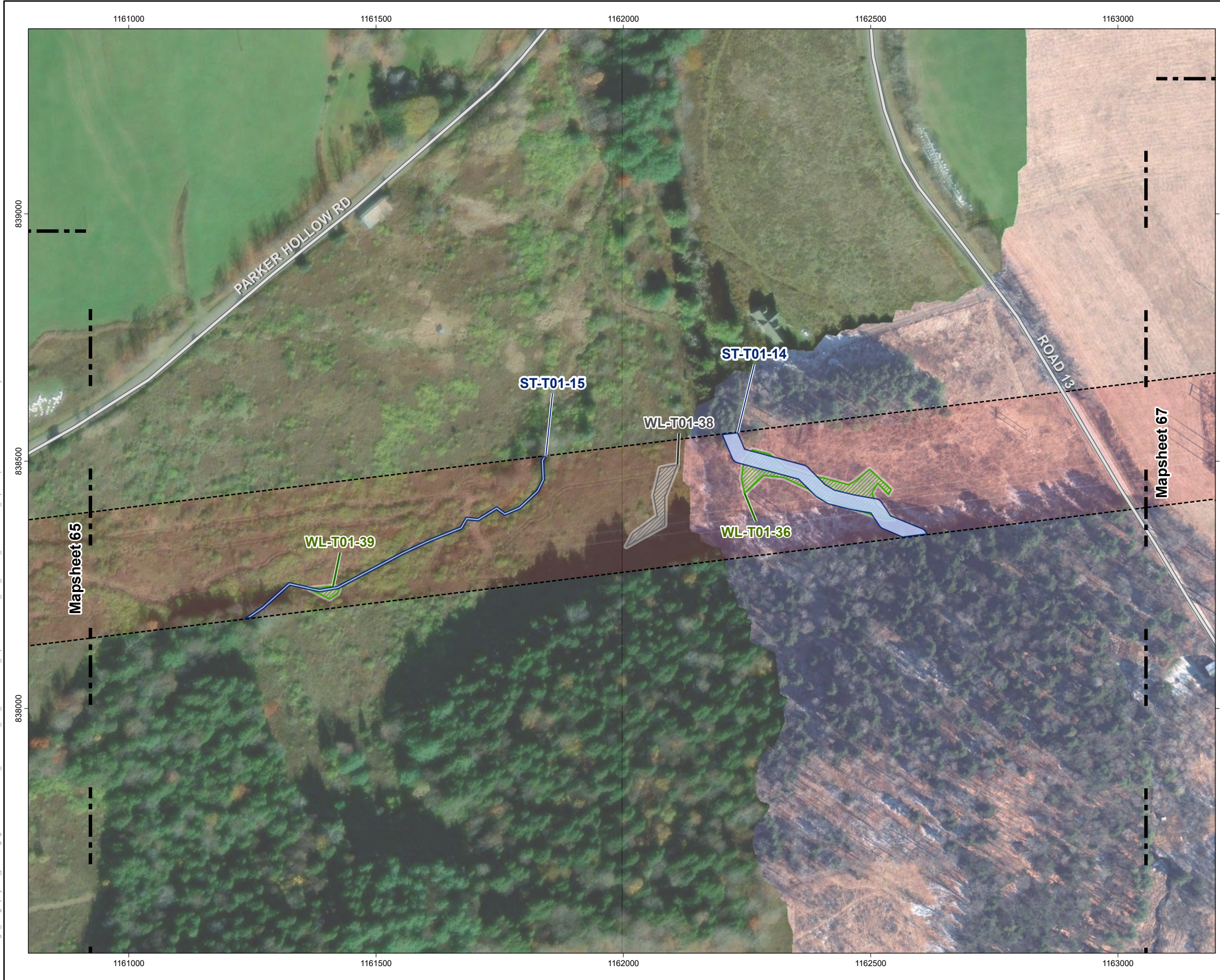
---

*Title*

**Delineated Wetlands & Streams  
 Mapsheet 65 of 102**

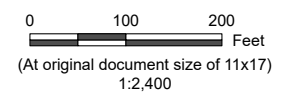
U:\213415070\gis\_cad\gis\_project\1\_permitting\figure\Antioch\VII\Exhibit\_4\213415070\_JTS\_Environmental\_Impacts\Impacts.aprx Revised: 2024-11-11 By: abhattaral





**Jennison Transmission Solution Project**

- Proposed Right-of-Way
- Field-Delineated Feature**
- Delineated Stream
- Delineated Wetland – Federal Jurisdiction
- Delineated Wetland – Non-Jurisdiction
- Mapsheet Match Line
- Road or Highway**
- Local, Neighborhood, Rural or City Street



**Notes**  
 1. Data Sources: See Figure 4-6 Mapsheet Index notes

<i>Project Location</i> Chenango, Delaware, & Otsego Counties, NY	<i>Prepared by</i> AB on 2024-02-08 TR by DG on 2024-07-30 IR by AS on 2024-10-18
<i>Client/Project</i> Jennison Transmission Solution Project NYSEG CLCPA Program	<i>Client/Project</i> 213415070 REVA

*Figure No.*  
**4-6**

*Title*  
**Delineated Wetlands & Streams  
 Mapsheet 66 of 102**

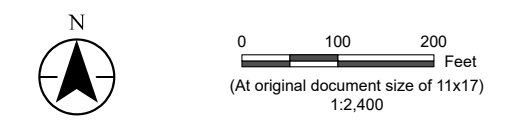
U:\213415070\gis\_cad\gis\_project1\permitting\figure\Antiole\11\Exhibit\_4\213415070\_JTS\_Environmental\_Impacts.aprx Revised: 2024-11-11 By: abhattalal





**Jennison Transmission Solution Project**

- Proposed Right-of-Way
- Field-Delineated Feature**
- Wetland Continuation Line
- Delineated Wetland – Federal Jurisdiction
- Mapsheet Match Line
- Road or Highway**
- Local, Neighborhood, Rural or City Street



**Notes**  
 1. Data Sources: See Figure 4-6 Mapsheet Index notes

*Project Location*  
 Chenango, Delaware, & Otsego Counties, NY

*Client/Project*  
 Jennison Transmission Solution Project  
 NYSEG CLCPA Program

*Prepared by* AB on 2024-02-08  
 TR by DG on 2024-07-30  
 IR by AS on 2024-10-18

213415070 REVA

**Figure No.**  
**4-6**





**Title**  
**Delineated Wetlands & Streams**  
**Mapsheet 67 of 102**

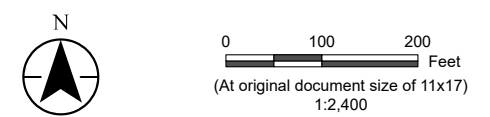
U:\213415070\gis\_cad\gis\_project\1\_permitting\figure\Antiole\11\Exhibit\_4\213415070\_JTS\_Environmental\_Impacts\11\Exhibit\_4\213415070\_JTS\_Environmental\_Impacts.aprx Revised: 2024-11-11 By: abhattalari





**Jennison Transmission Solution Project**

-  Proposed Right-of-Way
- Field-Delineated Feature**
-  Wetland Continuation Line
-  Delineated Wetland – Federal Jurisdiction
-  Mapsheet Match Line



**Notes**  
 1. Data Sources: See Figure 4-6 Mapsheet Index notes

---

*Project Location*  
 Chenango, Delaware, & Otsego Counties, NY

*Client/Project*  
 Jennison Transmission Solution Project  
 NYSEG CLCPA Program

*Figure No.*  
**4-6**

*Title*  
**Delineated Wetlands & Streams  
 Mapsheet 68 of 102**

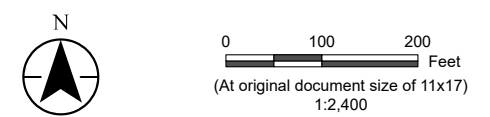
U:\213415070\gis\_cad\gis\_project\1\_permitting\figure\Article VIII\Exhibit\_4\213415070\_JTS\_Environmental\_Impacts.aprx Revised: 2024-11-11 By: abhattaral





**Jennison Transmission Solution Project**

- Proposed Right-of-Way
- Field-Delineated Feature**
- Wetland Continuation Line
- Delineated Stream
- Delineated Open Water
- Delineated Wetland – Federal Jurisdiction
- Delineated Wetland – Non-Jurisdiction
- Mapsheet Match Line
- Road or Highway**
- Local, Neighborhood, Rural or City Street



**Notes**  
 1. Data Sources: See Figure 4-6 Mapsheet Index notes

<i>Project Location</i> Chenango, Delaware, & Otsego Counties, NY	<i>Prepared by</i> AB on 2024-02-08 <i>TR by</i> DG on 2024-07-30 <i>IR by</i> AS on 2024-10-18
<i>Client/Project</i> Jennison Transmission Solution Project NYSEG CLCPA Program	<i>213415070 REVA</i>

*Figure No.*  
**4-6**

*Title*  
**Delineated Wetlands & Streams  
 Mapsheet 69 of 102**

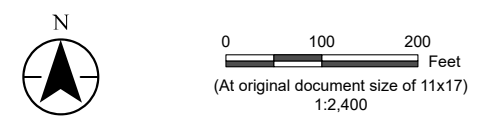
U:\213415070\gis\_cad\gis\_project1\permitting\figure\Antioch\11\Exhibit\_4\213415070\_JTS\_Environmental\_Impacts.aprx Revised: 2024-11-11 By: abhattaral





**Jennison Transmission Solution Project**

- Proposed Right-of-Way
- Field-Delineated Feature**
- Ditch
- Wetland Continuation Line
- Delineated Stream
- Delineated Wetland – Federal Jurisdiction
- Delineated Wetland – Non-Jurisdiction
- Mapsheet Match Line
- Road or Highway**
- Local, Neighborhood, Rural or City Street



**Notes**  
 1. Data Sources: See Figure 4-6 Mapsheet Index notes

*Project Location*  
 Chenango, Delaware, & Otsego Counties, NY

*Client/Project*  
 Jennison Transmission Solution Project  
 NYSEG CLCPA Program

*Prepared by* AB on 2024-02-08  
 TR by DG on 2024-07-30  
 IR by AS on 2024-10-18

*Client/Project* 213415070 REVA

**Figure No.**  
**4-6**

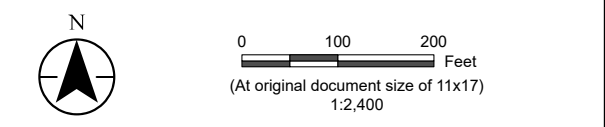
**Title**  
**Delineated Wetlands & Streams**  
**Mapsheet 70 of 102**

U:\213415070\gis\_cad\gis\_project1\permitting\figure\Antiole\VIII\Exhibit\_4\213415070\_JTS\_Environmental\_Impacts.aprx Revised: 2024-11-11 By: abhattaral





- Jennison Transmission Solution Project**
- Proposed Right-of-Way
  - Field-Delineated Feature**
    - Culvert
    - Ditch
    - Wetland Continuation Line
    - Delineated Stream
    - Delineated Open Water
    - Delineated Wetland – Federal Jurisdiction
  - Mapsheet Match Line**
    - Mapsheet Match Line
  - Road or Highway**
    - Local, Neighborhood, Rural or City Street



**Notes**  
 1. Data Sources: See Figure 4-6 Mapsheet Index notes

*Project Location*  
 Chenango, Delaware, & Otsego Counties, NY

*Client/Project*  
 Jennison Transmission Solution Project  
 NYSEG CLCPA Program

*Prepared by*  
 AB on 2024-02-08  
 TR by DG on 2024-07-30  
 IR by AS on 2024-10-18

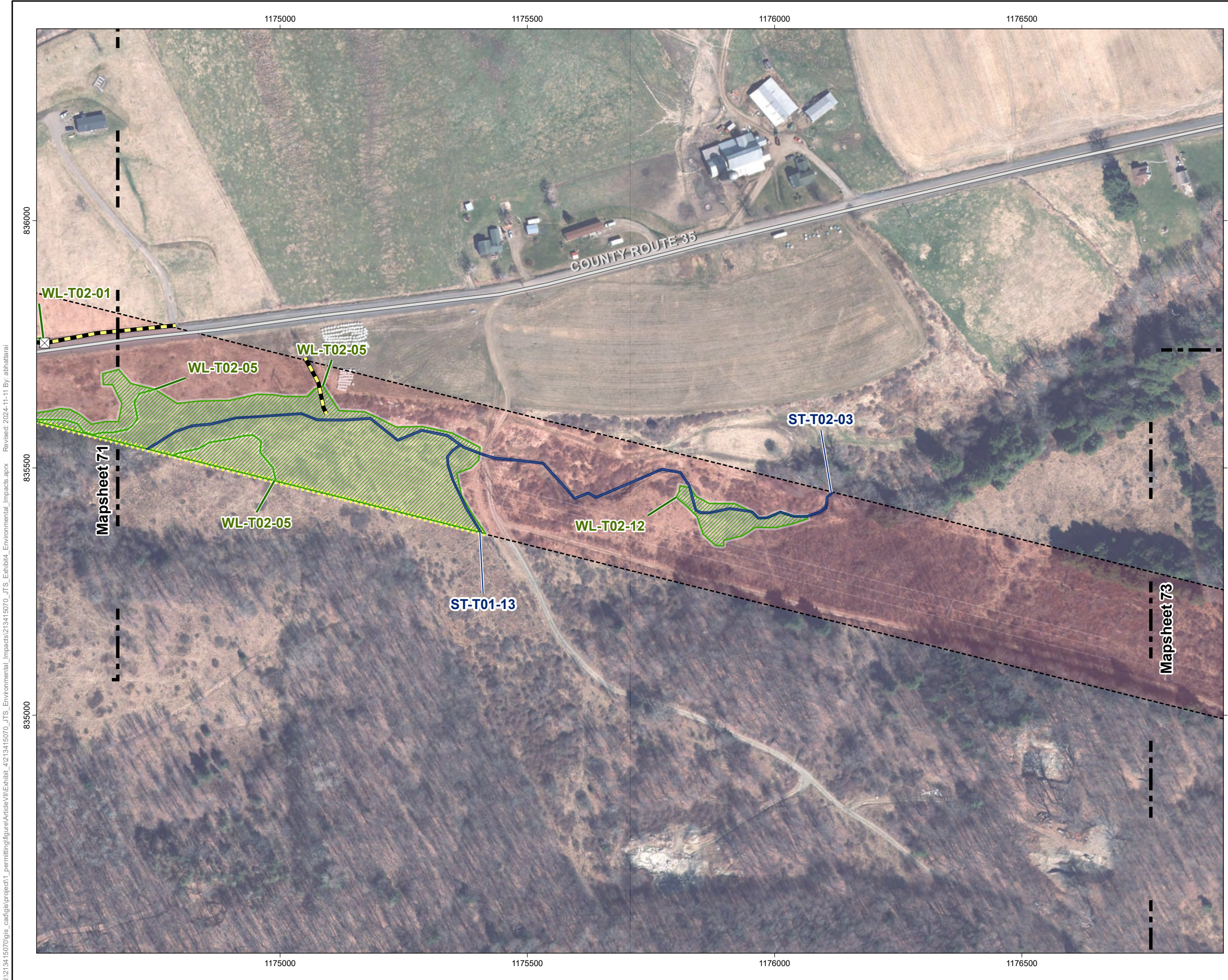
*Client/Project*  
 213415070 REVA

**Figure No.**  
**4-6**

**Title**  
**Delineated Wetlands & Streams**  
**Mapsheet 71 of 102**

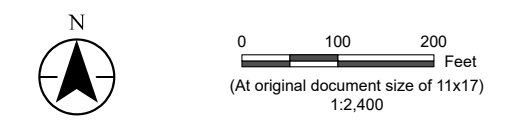
U:\213415070\gis\_cad\gis\project1\permitting\figure\Antioch\11\Exhibit\_4\213415070\_JTS\_Environmental\_Impacts\1\3415070\_JTS\_Environmental\_Impacts.aprx Revised: 2024-11-11 By: abhtalaral





**Jennison Transmission Solution Project**

- Proposed Right-of-Way
- Field-Delineated Feature**
- Culvert
- Ditch
- Wetland Continuation Line
- Delineated Stream
- Delineated Wetland – Federal Jurisdiction
- Mapsheet Match Line
- Road or Highway**
- Local, Neighborhood, Rural or City Street



**Notes**  
 1. Data Sources: See Figure 4-6 Mapsheet Index notes

*Project Location*  
 Chenango, Delaware, & Otsego Counties, NY

*Client/Project*  
 Jennison Transmission Solution Project  
 NYSEG CLCPA Program

*Figure No.*  
**4-6**

*Title*  
**Delineated Wetlands & Streams  
 Mapsheet 72 of 102**

U:\213415070\gis\_cad\gis\_project1\permitting\figure\Antioch\11\Exhibit\_4\213415070\_JTS\_Environmental\_Impacts\1\Exhibit\_4\213415070\_JTS\_Environmental\_Impacts.aprx Revised: 2024-11-11 By: abhattaral

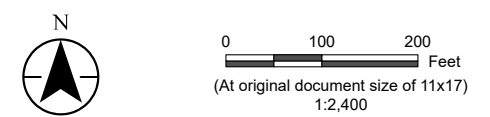


U:\213415070\gis\_cad\gis\project1\permitting\figure\Antioe\VIII\Exhibit\_4\213415070\_JTS\_Environmental\_Impacts\Impacts.aprx Revised: 2024-11-11 By: abhattaral



**Jennison Transmission Solution Project**

- Proposed Right-of-Way
- Field-Delineated Feature
- Delineated Wetland – Non-Jurisdiction
- Mapsheet Match Line



**Notes**  
 1. Data Sources: See Figure 4-6 Mapsheet Index notes

*Project Location*  
 Chenango, Delaware, & Otsego Counties, NY

*Client/Project*  
 Jennison Transmission Solution Project  
 NYSEG CLCPA Program

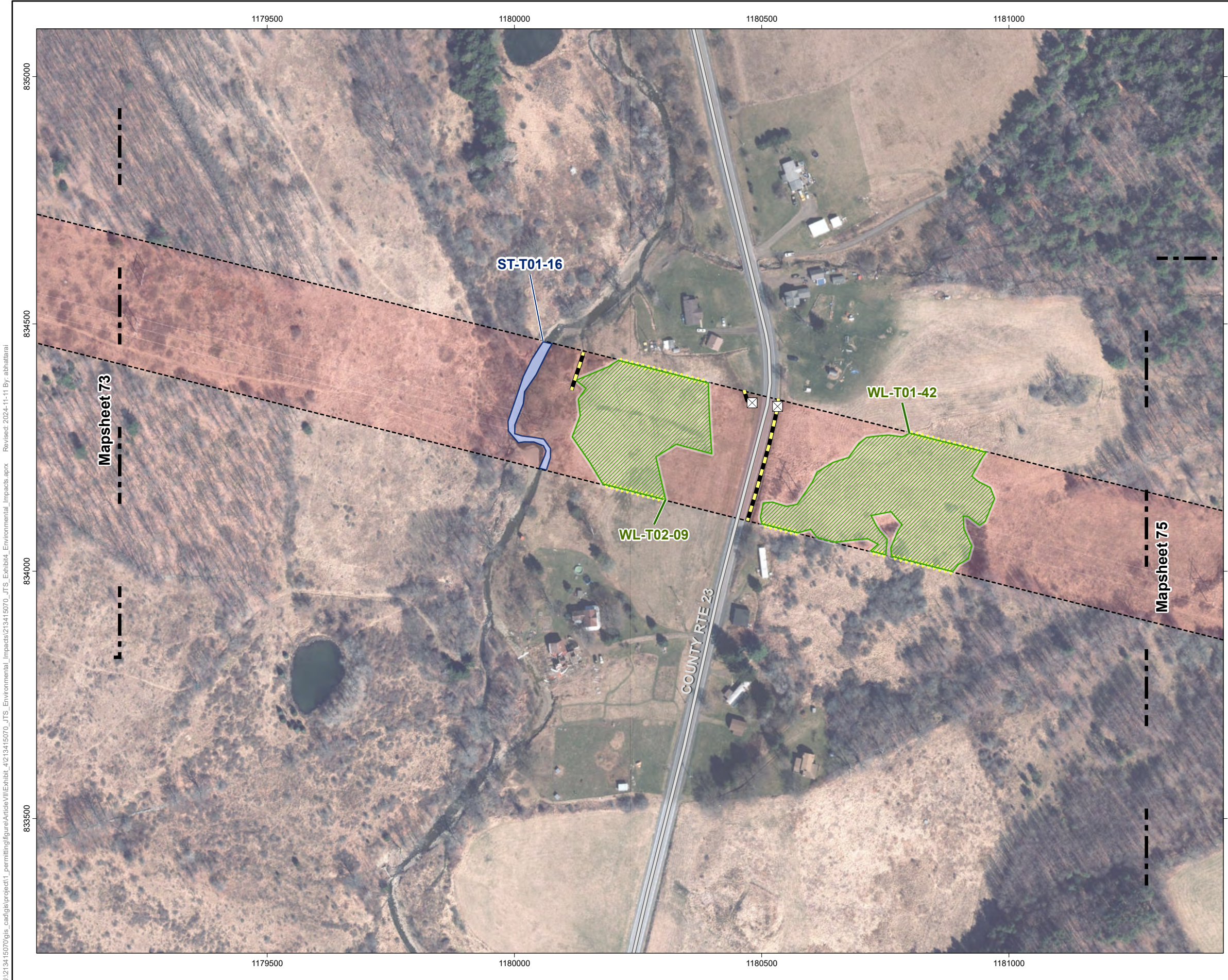
*Figure No.*  
**4-6**

*Title*  
**Delineated Wetlands & Streams  
 Mapsheet 73 of 102**

*Prepared by* AB on 2024-02-08  
 TR by DG on 2024-07-30  
 IR by AS on 2024-10-18

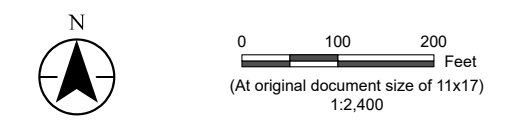
213415070 REVA





**Jennison Transmission Solution Project**

- Proposed Right-of-Way
  
- Field-Delineated Feature**
- Culvert
- Ditch
- Wetland Continuation Line
- Delineated Stream
- Delineated Wetland – Federal Jurisdiction
  
- Mapsheet Match Line
  
- Road or Highway**
- Local, Neighborhood, Rural or City Street



**Notes**  
 1. Data Sources: See Figure 4-6 Mapsheet Index notes

---

*Project Location*  
 Chenango, Delaware, & Otsego Counties, NY

*Client/Project*  
 Jennison Transmission Solution Project  
 NYSEG CLCPA Program

*Figure No.*  
**4-6**

*Title*  
**Delineated Wetlands & Streams  
 Mapsheet 74 of 102**

U:\213415070\gis\_cad\gis\project1\permitting\figure\Antioe\VII\Exhibit\_4\213415070\_JTS\_Environmental\_Impacts.aprx Revised: 2024-11-11 By: abhattaral





**Jennison Transmission Solution Project**

Proposed Right-of-Way

Mapsheet Match Line



0 100 200 Feet  
 (At original document size of 11x17)  
 1:2,400

**Notes**

1. Data Sources: See Figure 4-6 Mapsheet Index notes

*Project Location*  
 Chenango, Delaware, & Otsego Counties, NY

*Prepared by* AB on 2024-02-08  
 TR by DG on 2024-07-30  
 IR by AS on 2024-10-18

*Client/Project*  
 Jennison Transmission Solution Project  
 NYSEG CLCPA Program

213415070 REVA

**Figure No.**

**4-6**

**Title**

**Delineated Wetlands & Streams  
 Mapsheet 75 of 102**

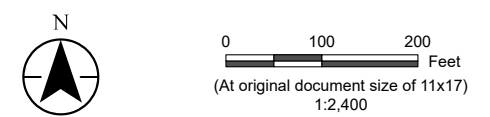
U:\213415070\gis\_cad\gis\project1\permitting\figure\Article VII\Exhibit\_4\213415070\_JTS\_Environmental\_Impacts.aprx Revised: 2024-11-11 By: abhattalal





**Jennison Transmission Solution Project**

- Proposed Right-of-Way
- Field-Delineated Feature**
- Culvert
- Ditch
- Wetland Continuation Line
- Delineated Stream
- Delineated Wetland – Federal Jurisdiction
- Delineated Wetland – Non-Jurisdiction
- Mapsheet Match Line
- Road or Highway**
- Local, Neighborhood, Rural or City Street



**Notes**  
 1. Data Sources: See Figure 4-6 Mapsheet Index notes

<i>Project Location</i> Chenango, Delaware, & Otsego Counties, NY	<i>Prepared by</i> AB on 2024-02-08 <i>TR by</i> DG on 2024-07-30 <i>IR by</i> AS on 2024-10-18
<i>Client/Project</i> Jennison Transmission Solution Project NYSEG CLCPA Program	213415070 REVA

*Figure No.*  
**4-6**

*Title*

**Delineated Wetlands & Streams  
 Mapsheet 76 of 102**

U:\213415070\gis\_cad\gis\_project\1\_permitting\figure\Antioe\11\Exhibit\_4\2\_13415070\_JTS\_Environmental\_Impacts\13415070\_JTS\_Exhibit\_Environmental\_Impacts.aprx Revised: 2024-11-11 By: abhtalaral

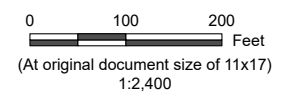


U:\213415070\gis\_cad\gis\project1\permitting\figure\Antiole\11\Exhibit\_4\213415070\_JTS\_Environmental\_Impacts.aprx Revised: 2024-11-11 By: abhattalari



### Jennison Transmission Solution Project

- Proposed Right-of-Way
- Mapsheet Match Line
- Road or Highway**
  - Local, Neighborhood, Rural or City Street



**Notes**  
 1. Data Sources: See Figure 4-6 Mapsheet Index notes

---

*Project Location*  
 Chenango, Delaware, & Otsego Counties, NY

*Client/Project*  
 Jennison Transmission Solution Project  
 NYSEG CLCPA Program

*Figure No.*  
**4-6**

*Title*  
**Delineated Wetlands & Streams  
 Mapsheet 77 of 102**

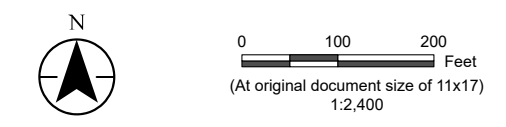
Prepared by AB on 2024-02-08  
 TR by DG on 2024-07-30  
 IR by AS on 2024-10-18

213415070 REVA





- Jennison Transmission Solution Project**
- Proposed Right-of-Way
  - Field-Delineated Feature**
  - Wetland Continuation Line
  - Delineated Wetland – Non-Jurisdiction
  - Mapsheet Match Line
  - Road or Highway**
  - Local, Neighborhood, Rural or City Street



**Notes**  
 1. Data Sources: See Figure 4-6 Mapsheet Index notes

Project Location: Chenango, Delaware, & Otsego Counties, NY  
 Prepared by AB on 2024-02-08  
 TR by DG on 2024-07-30  
 IR by AS on 2024-10-18

Client/Project: Jennison Transmission Solution Project  
 NYSEG CLCPA Program  
 213415070 REVA

Figure No.  
**4-6**

Title  
**Delineated Wetlands & Streams  
 Mapsheet 78 of 102**

U:\213415070\gis\_cad\gis\project1\permitting\figure\Antiole\VIII\Exhibit\_4\213415070\_JTS\_Environmental\_Impacts.aprx Revised: 2024-11-11 By: abhattalari